

# Measurement of the mobile phone cover

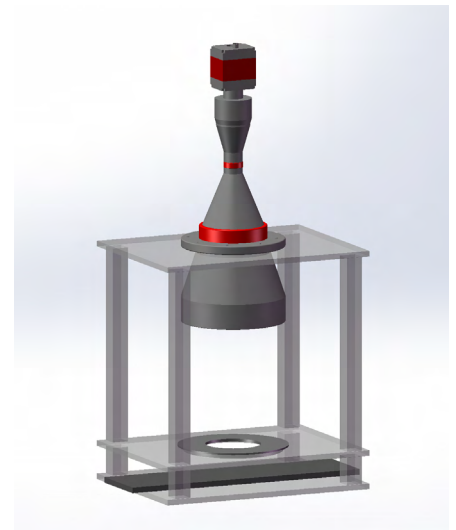
**Application:** Measurement of the mobile phone cover

**NEW TRY Products:** Telecentric lens(VCM35F-190) +  
Telecentric illuminator(VCL-190-1W-G)

- F Mount Bi telecentricity;
- <0.1% distortion;
- Clear contour;
- Coupled telecentric illuminator.

**Camera:** 29MP GEV-B6620M-TF000, 35F(44mm), 5.5um

- Up to 6600\*4400 pixels



## Test conclusion:

- Accuracy: Depending on different cameras resolution and image areas.  
157.82mm × 105.21mm < 0.023mm with 6600x4400 pixels.
- Clear image, nearly 0 distortion.
- Test image: Achieved image with high definition and great uniformity.

